

SUMMER RESEARCH

EDUCATION RESEARCH CENTER

Work on real projects. Build real skills.

PROGRAM OVERVIEW:

The ERC Graduate Research Program pairs faculty with doctoral students for a summer of real research.

Faculty get support.

Students do real research.

WHO SHOULD APPLY:

Faculty:

Full-time with a research project in data analysis or collection stage

Students:

Doctoral or master's students who've completed at least one methods course

TIMELINE:

April 15: Submit interest forms

April 23: Faculty present their projects

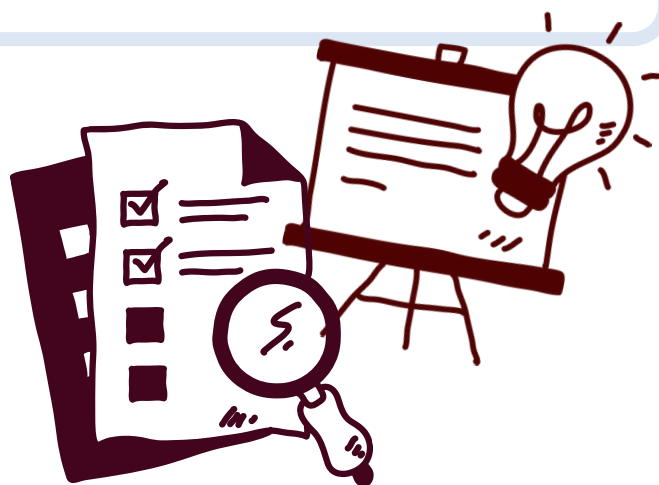
Summer: Matched pairs conduct research

QUESTIONS?

Email Dr. Andy Kwok: akwok@tamu.edu

INTERESTED?

Scan the QR code below to learn more and apply!



TEXAS A&M UNIVERSITY
Education
Research Center